

046851
RECEIVED
LARAMIE COUNTY
CHEYENNE, WY.

CERTIFIED LAND CORNER RECORDATION '88 JUL 20 AM 11 30

DESCRIPTION OF CORNER EVIDENCE FOUND, AND ORIGINAL RECORD (If known)
Found no evidence of previous monumentation.

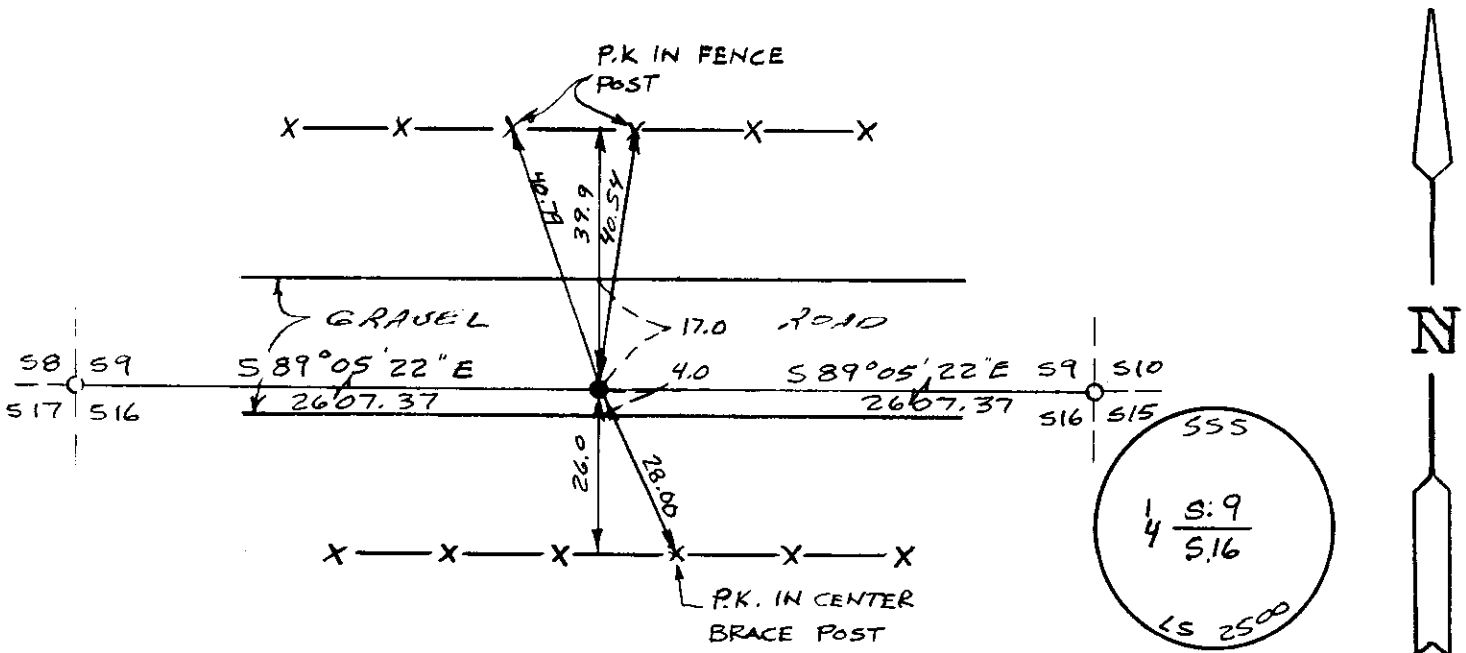
1/4 S.9
1/4 S.16
T.13N. R.64W.
6th P.M. G.L.O. Record: Unknown.

DESCRIPTION OF MONUMENT AND ACCESSORIES ESTABLISHED
TO PERPETUATE THE ORIGINAL LOCATION OF THIS CORNER:

At the corner: Set 1/2" x 24" rebar with aluminum cap 0.4 feet below surface stamped as shown below. Set at proportionate distance and on line between section corners East & West of monument.

Accessories : See ties below.

SKETCH, WITH COURSE AND DISTANCE TO ADJACENT CORNER IF DETERMINED IN THIS SURVEY.
(May Sketch or Paste Reproduction on Reverse Side.)



I, John A. Steil certify that I have carefully performed or reviewed the work done on the diagrammed corner as reported on this recordation form and approve the same.

John A. Steil
Signature of Surveyor

L.S. 2500
Registration No.

STATE OF WYOMING,
Office of Clerk and Recorder,
County of Laramie

This "corner record" was filed for record on the 20th day of July, 19 88, was noted on the cross-index plat and is assigned page No. _____, in book No. _____.

Janet C. Whitehead
County Official

Cross Index No. <u>J-11</u>	T. <u>13N</u>	R. <u>64W</u>	Mer <u>6th</u>
_____	T. _____	R. _____	Mer. _____
_____	T. _____	R. _____	Mer. _____
_____	T. _____	R. _____	Mer. _____
_____	T. _____	R. _____	Mer. _____
_____	T. _____	R. _____	Mer. _____
_____	T. _____	R. _____	Mer. _____